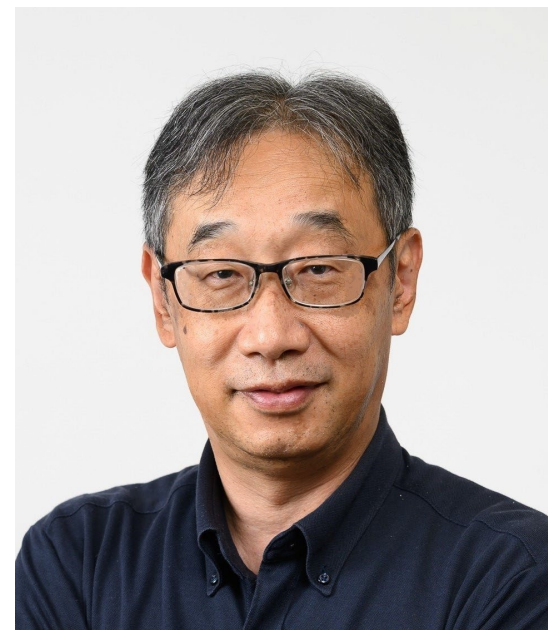


## Staff



Tatsuya Suzuki  
(Professor)



Hiroyuki Okuda  
(Associate professor)



Takuma Yamaguchi  
(Assistant professor)

## Collaborating Researcher



Shinkichi Inagaki  
(Prof. / Nanzan Univ.)



Akira Ito  
(Assoc. / Nagoya Univ.)

## Collaborating Company

Collaborative research  
with companies



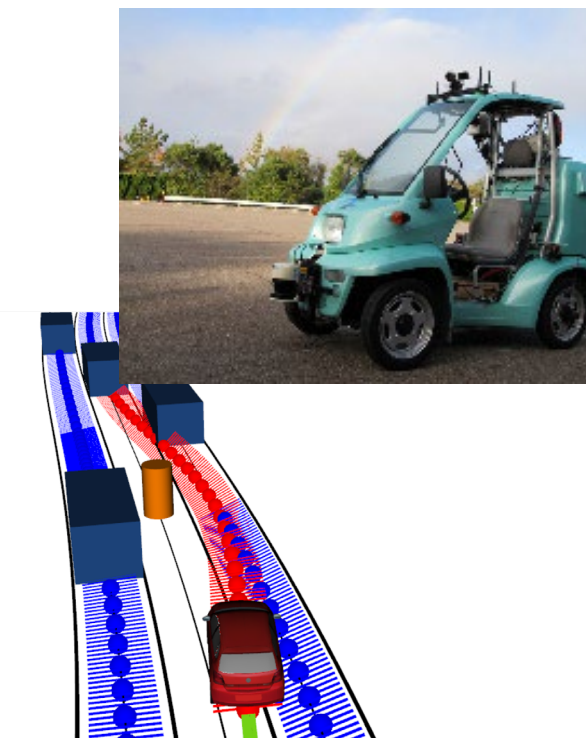
## Research Topics

### Mobility & Mechatronics

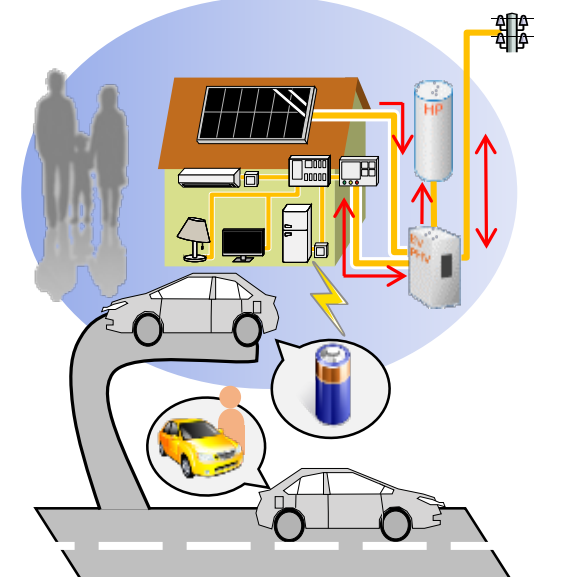
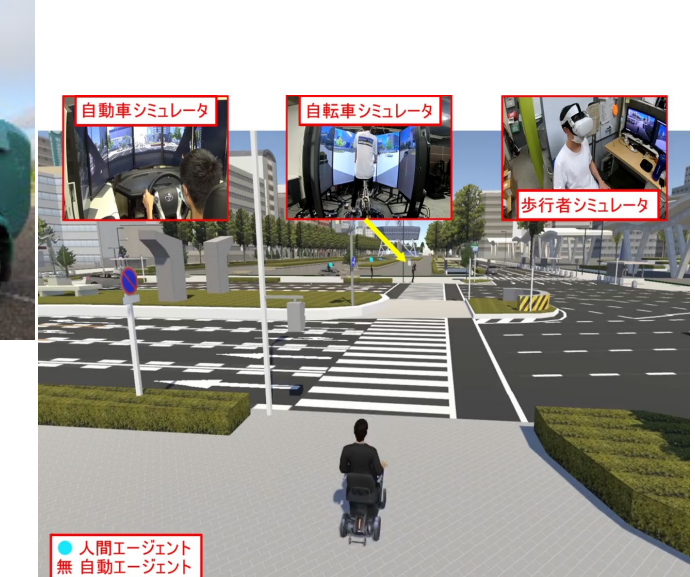
#### Automobile



Advanced Driver  
Assistance



Autonomous Driving

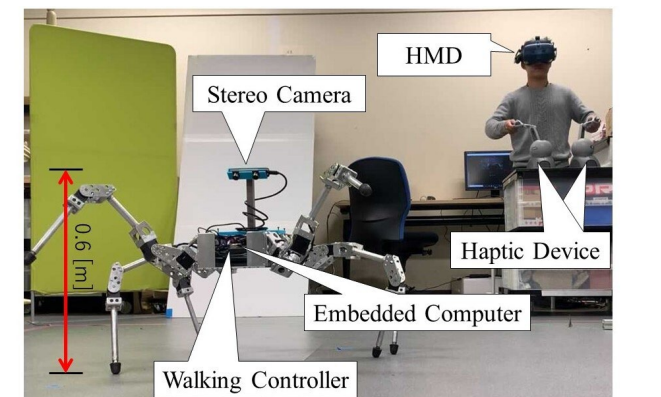


Energy  
Management

#### Robotics



Autonomous Mobile Robot



Legged Robot

## Research Policy

### Intelligent mobility and human symbiosis

With the motto of **balancing theory and practice**,  
we approach real-world problems using control,  
optimization, probability, and machine learning theory

Theory



Practice

Software



Hardware

## Events

### Lab. Events

- Softball tournament
- Soccer tournament
- Lab. party
- Lab. trip

### Academic Conferences

- IEEE ITSC/IV (Transportation)
- IEEE ICRA/IROS (Robotics)
- SICE JSAE

**Encouraged to present at conferences**

